



**VIEWPLUS®**

**ViewPlus Elite/Premier Network Instructions  
Revision: 2010 August**

## Table of Contents

### I. [Installing Your Printer Through a Network](#)

#### A. [Connect Embosser to the Network](#)

#### B. [Insert Installation USB](#)

#### C. [Installation](#)

### I. [Installing Your Printer Through a Network](#)

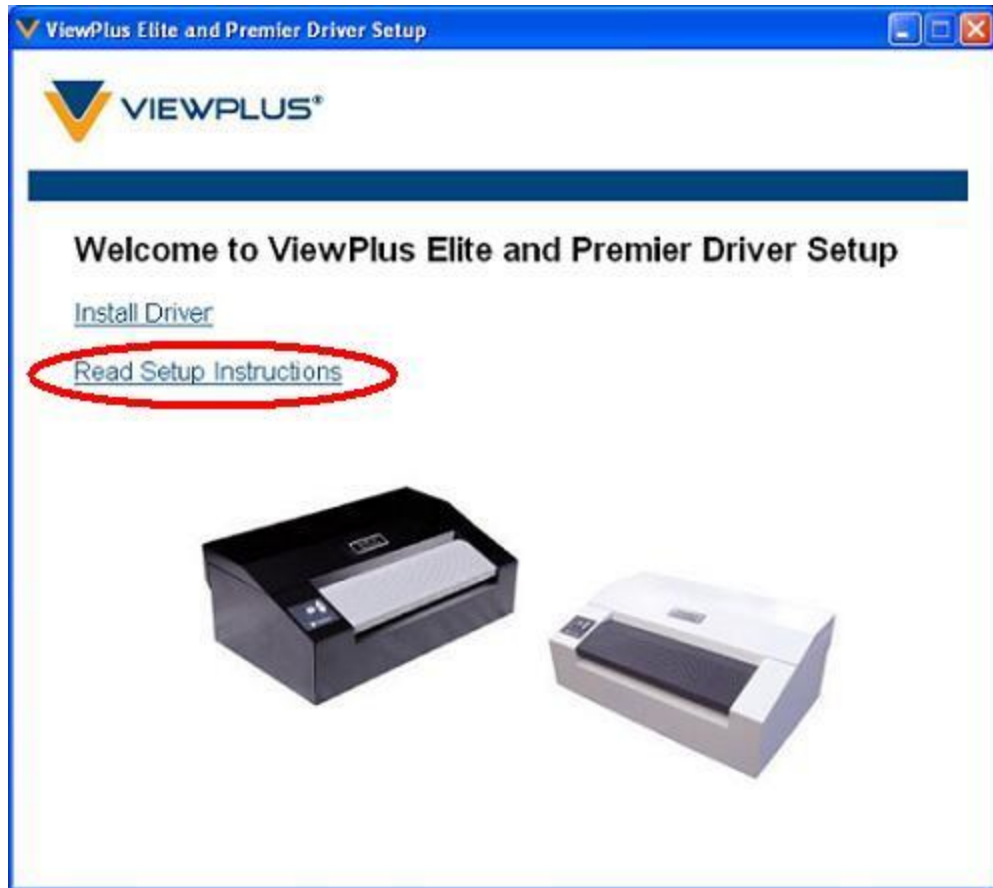
#### A. [Connect Embosser to the Network](#)

Insert one end of the network cable into the embosser and the second into your network port. Once the embosser is connected, locate the power button on the back of the printer and turn it to the on position.

#### B. [Insert Installation USB](#)

Next, insert the Elite/Premier installation USB that accompanied the embosser into the USB drive of your computer. It will start automatically.

On the Welcome screen, choose 'Read Setup Instructions' if you wish to view detailed installation instructions before installing.

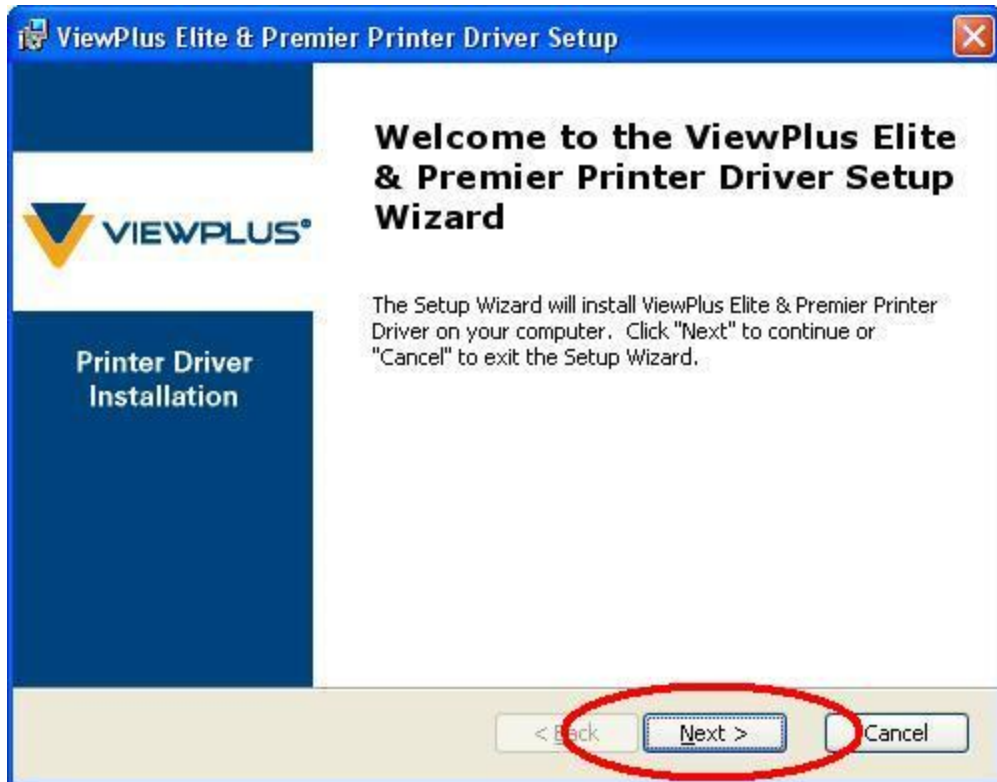


C. [Installation](#)

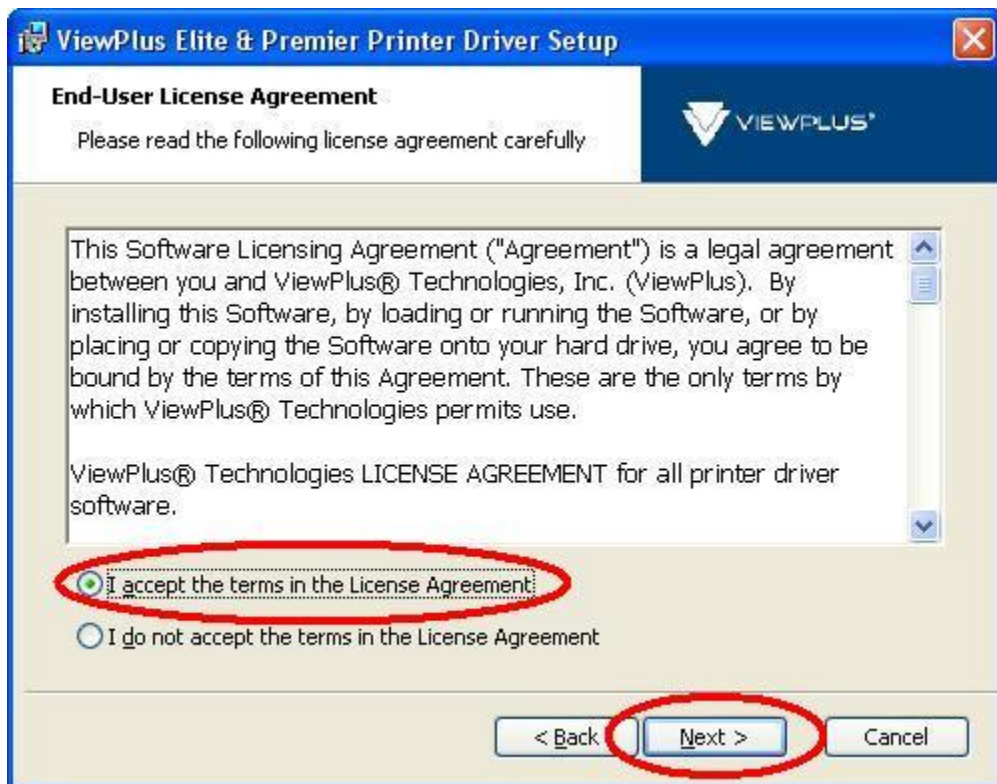
To begin driver installation, select 'Install Driver' from the Welcome screen.



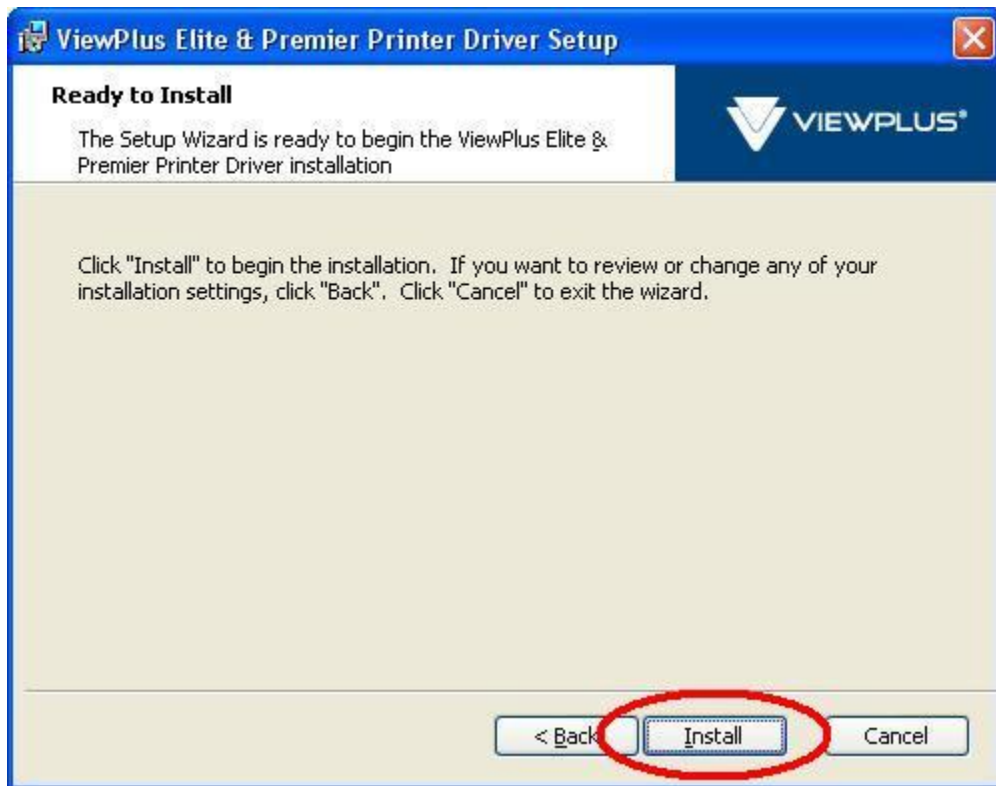
On the first screen, which welcomes you to the installation, choose 'Next'.



A user license agreement is displayed. To continue with installation, you must accept the terms of the license agreement and select 'Next'.



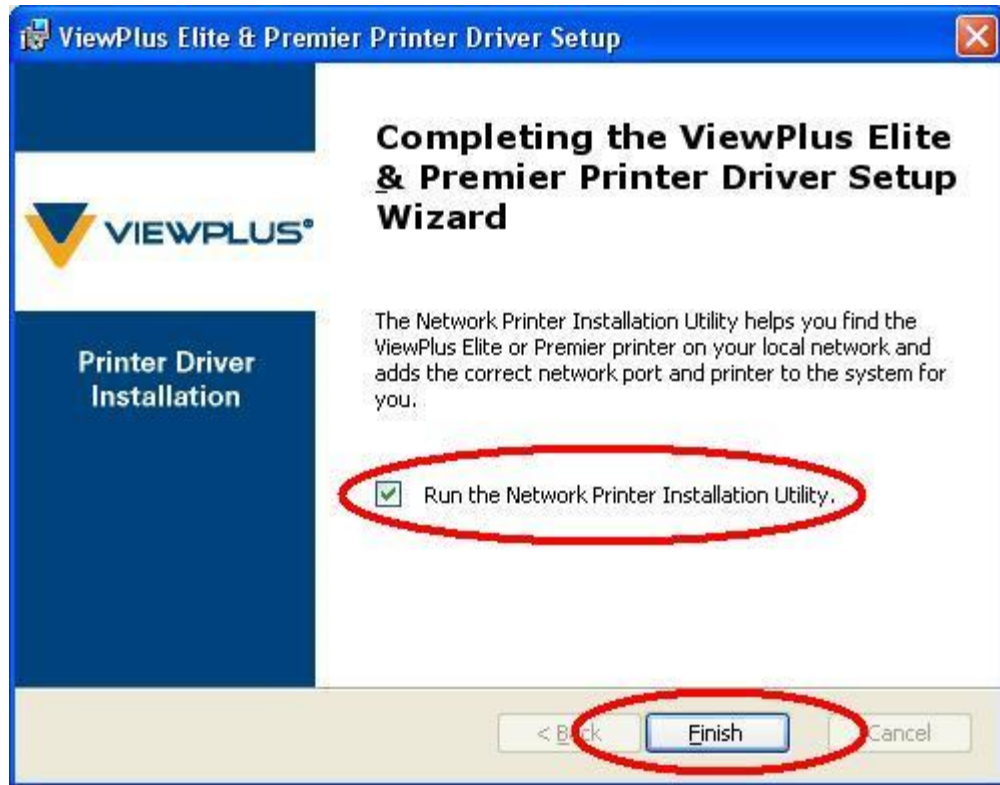
On the next screen, choose 'Install' to install the driver files.



**Windows Vista or Windows 7:** A dialog may pop up asking you if you would like to install device software from ViewPlus Technologies. Choose 'Install'.

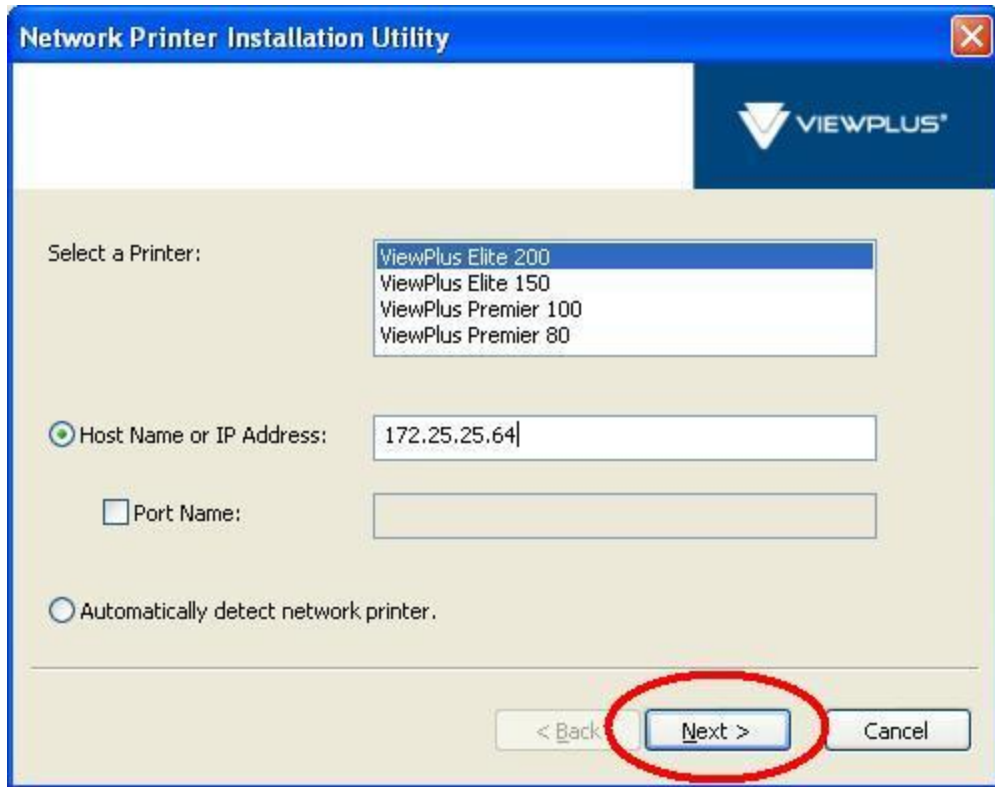
**Windows XP:** A dialog may pop up informing you that the software has not passed Windows Logo testing. Select 'Continue Anyway'.

You will be presented with an option to run the Network Printer Installation Utility. Check this box and select 'Finish'.



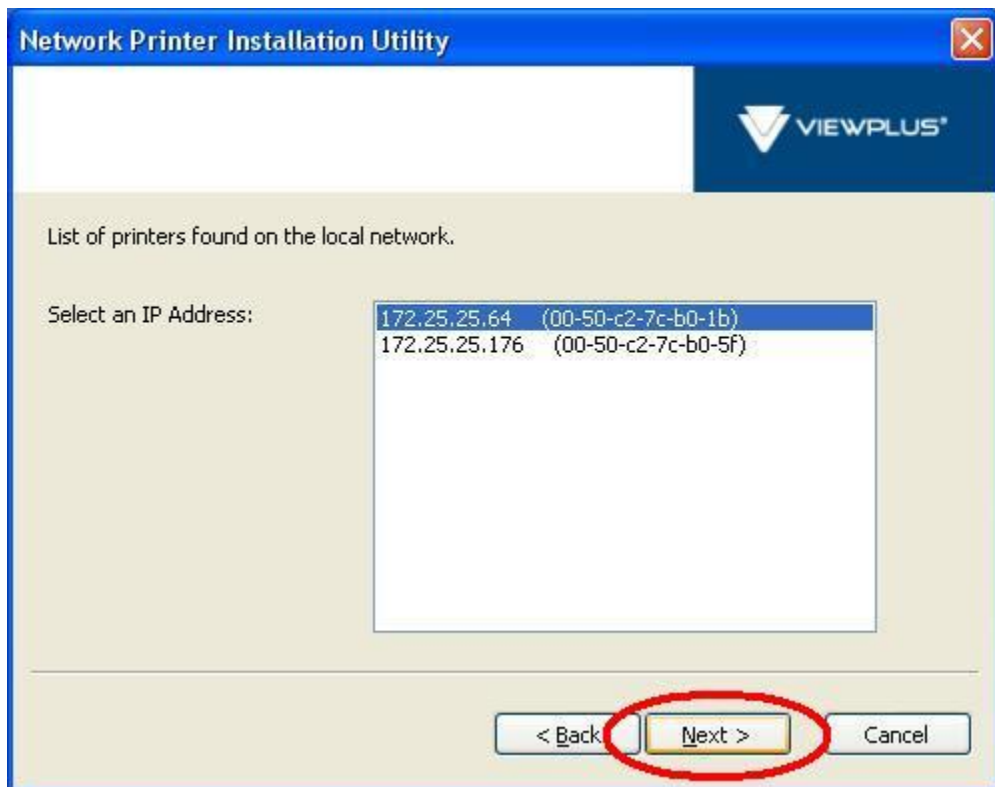
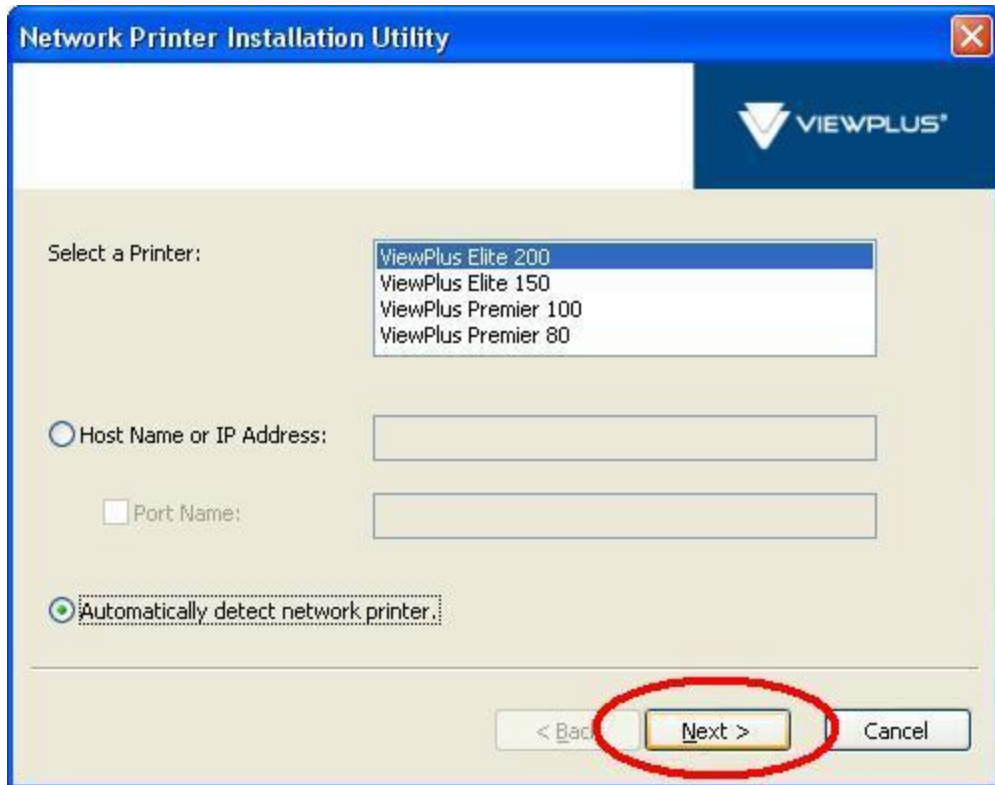
On the next screen, select the printer model you are installing from the list, then select one of the following options:

- If you already know the host name or IP address of the printer you are installing, select the 'Host Name or IP Address:' radio button, specify the host name or IP address in the appropriate blank and choose "Next".



- If you do not know the host name or IP address of the printer you are installing, select the 'Automatically detect network printer' radio button and choose 'Next'. A list of the printers found on the local network will appear. Select the appropriate one, matching the MAC address from the list to the one on the printer's serial number sticker if necessary, and choose 'Next'.





A dialog informing you that the printer has been successfully installed will appear. Choose 'OK'.



Restart your computer when prompted.

