



**VIEWPLUS®**

**ViewPlus Desktop Manual  
for Models with USB Ports  
Revision: 20160613**

# Table of Contents

- I. Introduction ..... 3
  - A. Preface ..... 3
  - B. FCC Compliance Statement..... 4
  - C. Safety Instructions ..... 6
- II. General Information ..... 7
  - A. Specifications ..... 7
  - B. Software Driver ..... 7
- III. Printer Setup ..... 8
  - A. Unpacking ..... 8
  - B. Software Installation ..... 8
- IV. Printer Properties ..... 9
  - A. Introduction ..... 9
  - B. Printer Properties..... 9
  - C. Printing Preferences..... 12
- V. Operator Panel..... 19
  - A. Functions..... 19
  - B. Status Lights ..... 19
  - C. Audio Alerts..... 20
- VII. Braille, Translation and Printing ..... 20
  - A. ViewPlus Tiger Software Suite ..... 20
  - B. Fonts..... 20
  - C. Math and Braille..... 21

D. Printing ..... 21

VIII. Software Packages ..... 22

    A. Software Packages ..... 22

IX. Training, Warranty, Maintenance and Support ..... 23

    A. Training ..... 23

    B. Maintenance ..... 23

    C. Support..... 23

    D. Warranty..... 24

## I. Introduction

### A. Preface

ViewPlusTiger Desktop Series  
ViewPlus Max/Cub/Cub Jr.  
Tactile Graphics and Braille Embossers, powered by Tiger  
Owner's Manual

Congratulations on owning one of the ViewPlus Desktop Series braille and graphics embossers! This manual will introduce you to basic information regarding your new printer. The ViewPlus Technologies web site is another resource for information on your ViewPlus embosser including examples, tutorials and other useful downloads.

Visit the web site at: <http://www.viewplus.com>

Your embosser is Powered by Tiger. This means:

**Braille production made flexible and easy**

Braille is translated and embossed from MS Word in one touch

Graphics are produced from any PC software including Illustrator & CorelDraw

**Tactile graphics embossed in fine detail – better than any braille printer**

Tiger tactile graphics are the highest-resolution of any embosser

Dot-height adjusts higher or lower for dark or light areas in images – 8 levels

**Braille & graphics software included - Tiger Software Suite (TSS)**

TSS incorporates braille software, tactile graphic studio, and more

Tigers are also compatible with Duxbury and other braille software

ViewPlus Tiger-brand embossers all include Powered by Tiger technology – models differ in size and price depending mostly on printing speed and paper/media width. Ink and braille models are available as well as cut-sheet paper feeders for certain units.

For more information about ViewPlus Tiger Software Suite visit  
<https://viewplus.com/product/tiger-software-suite/>

Model Numbers for the Desktop Series:

ViewPlus Max: 081402

ViewPlus Cub: 080804

ViewPlus Cub Jr. 040802

USER'S Manual



## **B. FCC Compliance Statement**

### **FCC Compliance Statement (USA)**

This equipment has been tested and found to comply with the limits for a Class A digital device, pursuant to Part 15 of the FCC Rules. Operation is subject to the following two conditions: (1) this device may not cause harmful interference, and (2) this device must accept any interference received, including interference that may cause undesired operation. If this equipment does cause harmful interference to radio or television reception, which can be determined by turning the equipment off and on, the user is encouraged to try to correct the interference by one or more of the following measures:

- Reorient or relocate the receiving antenna.
- Increase the separation between the equipment and receiver.
- Connect the equipment to an outlet on a circuit different from that to which the receiver is connected.
- Consult the dealer or an experienced radio/TV technician for help.

FCC Warning: Changes or modifications not expressly approved by the party responsible for compliance could void the user's authority to operate the equipment.

Note the following:

- The use of a non-shielded interface cable with the referenced device is prohibited.
- The length of the parallel interface cable must be 3 meters (10 feet) or less.

- The length of the serial interface cable must be 15 meters (50 feet) or less.
- The length of the power cord must be 3 meters (10 feet) or less.

This unit is also intended for connection to IT distribution systems.

### **Compliance Statement (Canada)**

This digital apparatus is in conformity with standard NMB-003 of Canada.  
Cet appareil numérique est conforme à la norme NMB-003 du Canada.

### **Compliance Statement (Germany)**

Bescheinigung des Herstellers/Importeurs:  
Hiermit wird bescheinigt, dass der Drucker der Maschinenlärminformationsverordnung 3. GSGV, 18.01.1991 entspricht: Der höchste Schalldruckpegel beträgt 70 dB(A) oder weniger gemäß EN27779-1991.

### **Compliance Statement (Europe)**

Warning: This product meets the interference requirements of EN55022. In a domestic environment, this product may cause radio interference in which case, the user may be required to take adequate measures.

### **Compliance Statement (Korea)**

This apparatus complies with CISPR22 requirements.

### **International Compliance**



EN55022:1994	Emissions series
EN55024:1998	Immunity characteristics
EN61000-3-2:1995	Power line harmonics
EN61000-3-3:1995	Power line flicker
EN61000-4-2:1995	Electrostatic discharge
EN61000-4-3:1995	Radiated susceptibility
EN61000-4-4:1995	Electrical fast transient/burst
EN61000-4-5:1995	Surge
EN61000-4-6:1996	Conducted immunity
EN61000-4-11:1994	Input voltage interruptions/DIPS

**CE MDD**  
**Authorized European Representative**  
ViewPlus GmbH  
Kolpingweg 15  
49492 Westerkappeln  
Germany  
+49 (0)5404-959 6414  
e-mail: [sales@viewplus.com](mailto:sales@viewplus.com)

### **Waste Electrical and Electronic Equipment (WEEE) Compliance**

ViewPlus GmbH complies with EU Directive 2002/96 regarding WEEE recycling; upon the conclusion of the product lifecycle, please contact ViewPlus GmbH concerning proper disposal.

## **C. Safety Instructions**

Read all of these safety instructions before using the printer. In addition, follow all warnings and instructions marked on the printer itself.

- Do not place printer on an unstable surface.
- Do not place printer near a radiator or heat source.
- Do not block or cover slots and openings in the printer's cabinet; do not insert objects through slots.
- Use only the type of power source indicated on printer's label.
- Connect all equipment to properly grounded electrical outlets.
- Do not use frayed or damaged power cord.
- The use of an extension cord with the printer is not recommended.
- Unplug printer before cleaning it; always clean it with a piece of damp cloth only.
- Do not spill liquid into printer.
- Only adjust those controls that are covered by the operating instructions.
- Except as specifically explained in the user's manual, do not attempt to service the printer by yourself.
- Detach the printer from power source and refer to qualified service personnel under the following conditions:
  - If the power cord or plug is damaged
  - If liquid has entered the printer.
  - If printer has been dropped or the cabinet is damaged.
  - If the printer does not operate properly or exhibits a distinct change in performance.

## II. General Information

### A. Specifications

	<b>VP Max</b>	<b>VP Cub &amp; VP Cub Jr.</b>
Character Sets	DotsPlus & Braille Screen fonts	DotsPlus & Braille screen fonts
Paper Feed Method	Tractor paper feed Single sheets	Tractor paper feed Single sheets
Maximum paper thickness	0.35 mm (0.014 inch)	0.35 mm (0.014 inch)
Paper width	Up to 355 mm (14 inch)	Up to 216 mm (8.5 inch)
Power supply	100 – 120 V (or 220 – 240 V) Current rating: 1.2 A (or 0.65 A) Frequency: 50 – 60 Hz	100 – 120 V (or 220 – 240 V) Current rating: 1.2 A (or 0.65 A) Frequency: 50 – 60 Hz
Power consumption	Standby 10 W Average Print 85 W	Standby 10 W Average Print 85 W
Embosser Dimensions		
Width	22.5 in. (572 mm)	16.8 in. (427 mm)
Depth	13.2 in. (335 mm)	13.2 in. (335 mm)
Height	6 in. (152 mm)	6 in. (152 mm)
Weight	22 lbs. (9.98 kg)	17.5 lbs. (7.95 kg)
Interface	USB	USB
Operating conditions		
Temperature	41° to 100° F (5° to 38° C)	41° to 100° F (5° to 38° C)
Relative Humidity	30% to 80% RH (non condensing)	30% to 80% RH (non condensing)
Reliability	15,000 hours @ 5% duty cycle	15,000 hours @ 5% duty cycle
Operating System	Windows XP or later	Windows XP or later

### B. Software Driver

The Windows print driver for VP Max, Cub, or Cub Jr. is compatible with operating systems from Windows XP to current Windows versions, both 32- and 64-bit systems.

ViewPlus also provides Mac OS 10.9 printer driver.



## III. Printer Setup

### A. Unpacking

- Place your packaged embosser on a solid base.
- Make sure the box is placed with the correct side up.
- Open the box, lift the embosser out of the cardboard box and remove the remaining packaging material and tapes.
- Open the embosser top lid and remove the shipping locks surrounding the print head.
- Check the embosser for any visible transport damage and missing items. If you find any transport damage, or if any accessories are missing, please contact your dealer.
- When unpacking a new unit, the following items should be included:
  - Embosser
  - Paper feed knob
  - Paper feed tray
  - Power cord
  - USB cable
  - USB flash drive
  - Installation Guide
- Install the paper feed knob at the right side of the machine.

#### **NOTE: SAVE THE PACKING MATERIAL AND BOX!**

If any damage occurred during shipping, most shipping companies require the box and the packing material in order to settle the insurance claim. The packing material must also be used to ship the ViewPlus embosser for warranty maintenance service, or repair. If not existent anymore, new packaging material has to be purchased before return of the embosser is authorized.

### B. Software Installation

The Windows printer driver is included with your embosser on the USB flash drive.

Do not connect the embosser to the computer during installation of the Windows printer driver, or turn it off during this process. Run the driver setup from the USB, or download the current Desktop embosser driver from the ViewPlus website, [www.viewplus.com](http://www.viewplus.com). Follow the instructions from the installation program.

After installation of the driver, connect the embosser to the computer and turn it on. The system should automatically detect the printer and add it to the system control panel under 'Devices and Printers'.

It is possible that it does not detect correctly at first try on one USB port. In this case, please try again to connect to the same or another USB port of your computer by unplugging the cable and plugging it back in.

## IV. Printer Properties

### A. Introduction

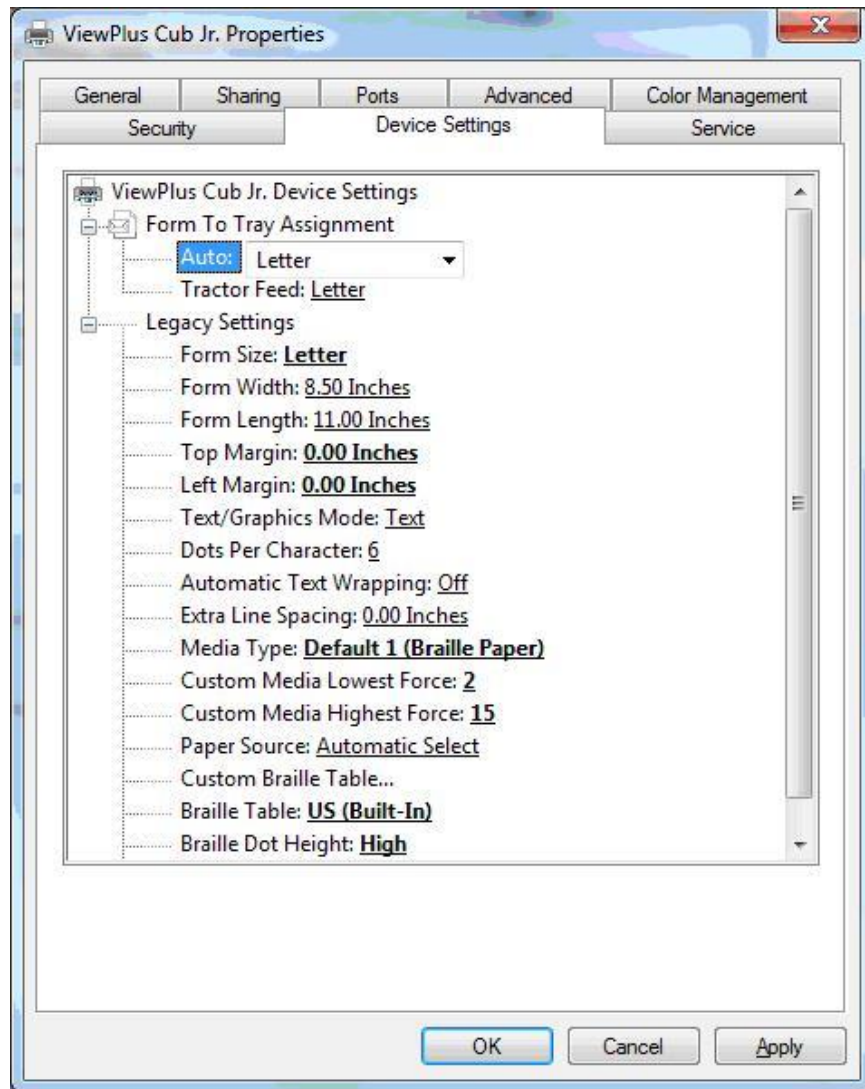
The ViewPlus printer driver uses a standard Windows printer driver interface to provide user access to setting options on the ViewPlus embosser from a local or networked computer. The printer properties are accessible through the Windows control panel for devices and printers. Select the VP Max, Cub, or Cub Jr. in the list of printers and get to the printer properties through the context menu. The printer properties contain general device settings such as for connectivity, sharing, and security, but also ViewPlus specific settings for legacy mode operation and service procedures on the ViewPlus printer. Note, that these options are only activated when your embosser is locally connected through an USB port and switched on.

Always click on the 'Apply' button to activate changes.

### B. Printer Properties

#### Device settings tab

The device settings are properties that are stored within the internal memory of the printer. Therefore, the printer needs to be locally connected and turned on. To activate any changes, always click on the 'Apply' button when done with the settings. The printer will beep once to confirm the receiving of the changed settings.



*Shows Device Settings Tab*

- **Form to Tray Assignment**

The first section of the Device Settings tab controls the EmBraille's "tray assignment", allowing you to set what paper size is loaded into the embosser.

**Tractor Feed** – Select which form size is loaded to the tractor feeder of the embosser.

**Manual Paper Feed** – Select which form size will be used when feeding paper through the single sheet feeder.

- **Legacy Settings**

The second section of the Device Settings controls the embosser's legacy settings. These settings are used when you print to the Max, Cub or Cub Jr. from programs that do not use the Windows printer driver, including some braille programs. Use the descriptions below to make your selections.

- **Form Size** - Select a standard page size, or select Custom to set the page size manually.
- **Form Width** - This field shows the page width. For standard page sizes, this field is informational only. If the Form Size is set to Custom, this field is editable.
- **Form Length** - This field shows the page length. For standard page sizes, this field is informational only. If the Form Size is set to Custom, this field is editable.
- **Top Margin** - Set the top margin to be used when printing in legacy mode. Note: If you are printing from an application that sends margin information with the print job, set the top margin to 0.
- **Left Margin** - Set the left margin to be used when printing in legacy mode. Note: If you are printing from an application that sends margin information with the print job, set the left margin to 0.
- **Text/Graphics Mode** - Select Text mode if your legacy document contains text. If the document is a graphic, select Graphics mode to remove the space between braille lines so that dots may be printed in an even grid.
- **Dots Per Character** - Select 6 or 8 dots.
- **Automatic Text Wrapping** - Select 'On' if lines in the document are longer than will fit on one printed line and you do not wish the lines to be truncated. If the document is formatted correctly for the page size and margins you are using, or if you do not wish to have long lines wrapped to the next line, select 'Off'.
- **Extra Line Spacing** - Set the amount of extra space desired between braille lines. This setting can only be set in multiples of 0.05 inches.
- **Media Type** - Select a default media type from the list, or choose Custom to set the punch forces manually for non-standard media.
- **Custom Media Lowest Force** - Enter the punch force value to be used for the lowest dots on a custom media type.
- **Custom Media Highest Force** - Enter the punch force value to be used for the highest dots on a custom media type.
- **Paper Source** - Select the source for the paper.
- **Custom Braille Table...** - This option allows you to load a braille table. The embosser can store up to six braille tables.
- **Braille Table** - Select which braille table to use when printing.
- **Braille Dot Height** - Select Low, Normal or High to control how tall the braille dots print.
- **Auto Load Paper** - Select whether to load paper automatically to top of form.

## Service tab

The Service tab of the printer properties dialog window provides information about the connected ViewPlus embosser at the bottom left. When contacting ViewPlus Support, please have the driver version, printer serial number, and firmware version available.

Furthermore, it provides several servicing functions for your VP embosser.

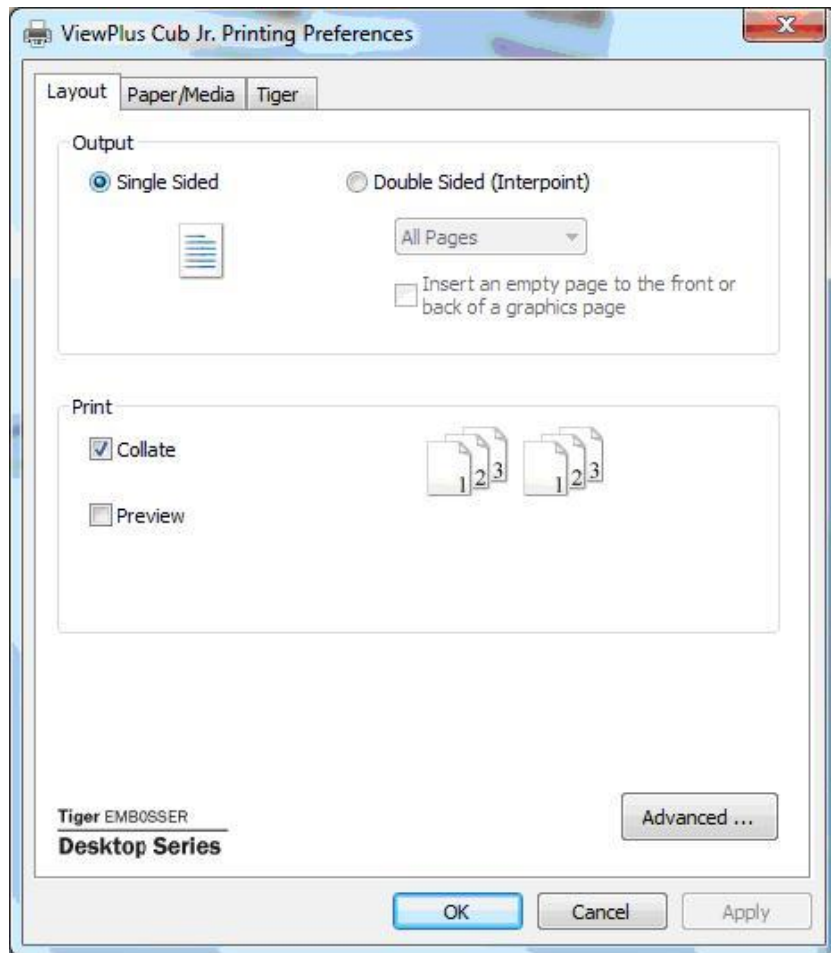
- **Open Tiger Toolbox...** - This button launches the Tiger Toolbox application. Please do not adjust any settings in the Tiger Toolbox unless directed to do so by ViewPlus Support.

## C. Printing Preferences

The Printing Preferences contain settings for printing from Windows programs to your embosser, that will affect the output of individual print jobs. To open the printing preferences dialog, right click on the ViewPlus printer within the Devices and Printers control panel under Windows, and choose the 'Printing Preferences...' option from the context menu. The printing preferences dialog is also accessible within the 'Printer properties' dialog window, when clicking the 'Preferences ...' button on the General tab. In addition, the printing preferences are accessible next to the printer selection box on the standard Windows print dialog when printing from most programs.

### Layout tab

The printing preferences options are organized onto three tabs. The Layout tab contains options pertaining to the page layout of the document to be printed. Use the descriptions of the options on the Layout tab to help make the appropriate selections for the document.



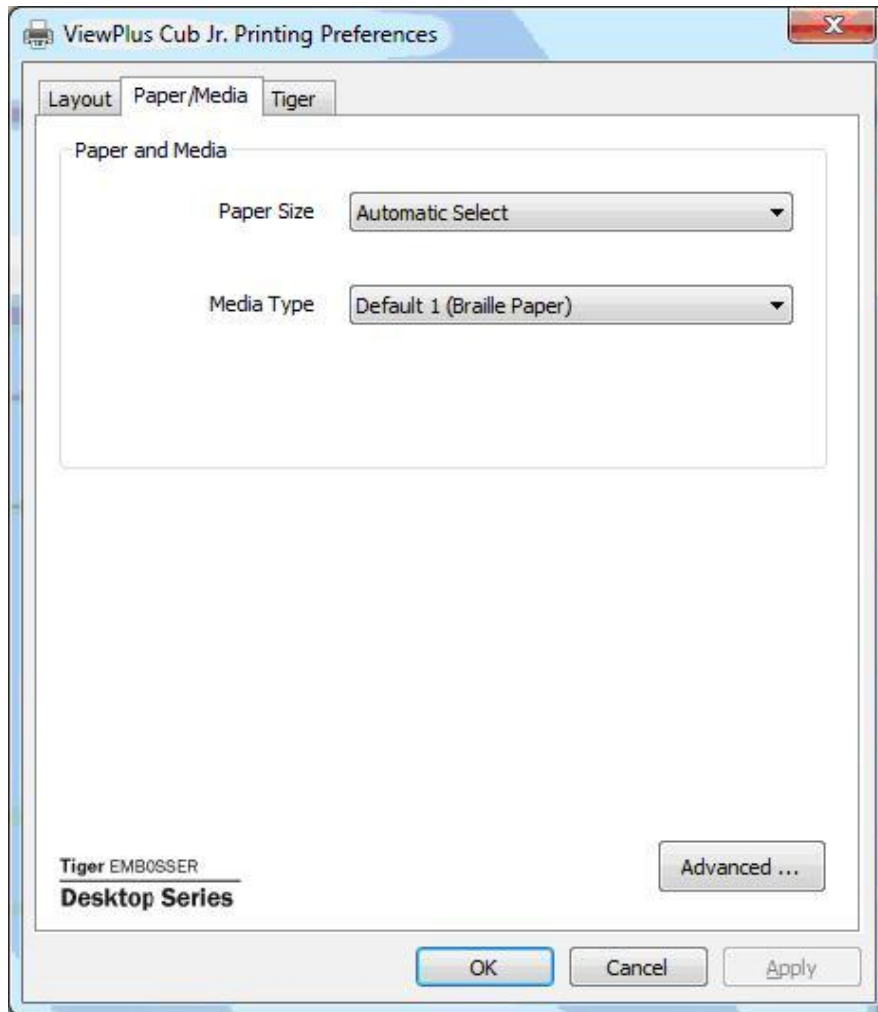
*Shows Layout Tab*

- **Output** - Select the desired duplexing option.
  - **Single Sided** - Select this option if you do not want the back sides of the pages printed.
  - **Double Sided (Interpoint)** - Select this option if you want the back sides of the pages printed. If Double Sided (Interpoint) is selected, make selections for the following options:
    - **Pages** - Select whether to print All Pages, Odd Pages or Even Pages. The default is 'All Pages'. The 'Odd Pages' and 'Even Pages' options can be useful to complete a print job if you have printed part of a interpoint document and did not turn the pages over before clicking OK on the print dialog to print the second side.
    - **Insert an empty page to the front or back of a graphics page** - Select whether to insert a blank page on the back side of pages that contain graphics. Do not select this option if you have already inserted blank pages after graphics pages in your document.

- **Print** - Select the desired printing options:
  - **Collate** - When the collate box is checked and multiple copies of a document are printed, one complete document will be embossed at a time. If the collate box is left unchecked all copies of each page will be embossed before embossing of the next page in the document begins.
  - **Preview** - If this option is checked, a preview of how the document will print and emboss will be shown in Tiger Viewer instead of printing.
  
- **Advanced** - This button brings up a dialog containing additional options only needed by advanced users. These options are:
  - **Rotated Landscape** - When checked, this option rotates landscape pages 180 degrees. This option is generally only used for spreadsheets, where it is helpful for the information to appear as it does on screen when printed on continuous (tractor fed) paper.
  - **Horizontal Shift** - This option is usually used when printing manual interpoint. When printing interpoint with 'All Pages' selected, this option should not be needed. However, it is often useful when printing 'Even Pages' and 'Odd Pages' as separate print jobs.

## **Paper/Media tab**

The Paper/Media tab contains options related to the type of paper or media being used for printing. Select the desired options for your media.



*Shows Paper/Media Tab*

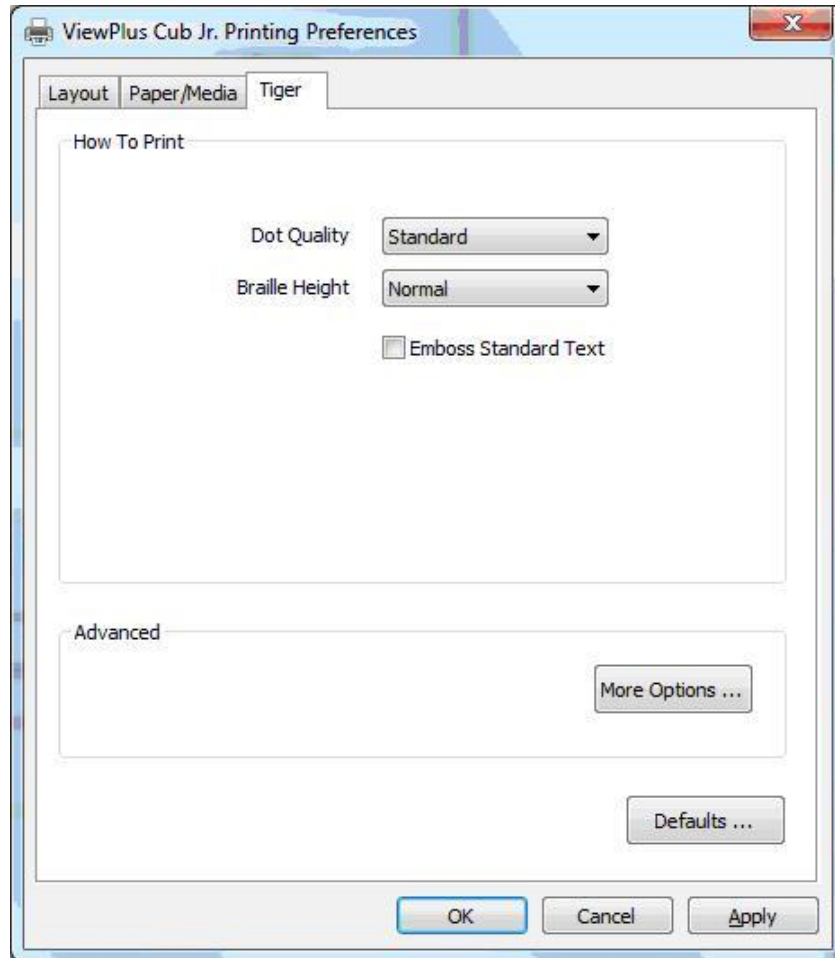
- **Paper and Media** - Select the options that apply to your media.
  - **Paper Size** - Select the paper size you are using from the list, or leave the setting at Automatic Select to allow the application you are printing from to choose the correct paper size for you.
  - **Media Type** - Select the type of media you are using.
- **Advanced** - Selecting the 'Advanced...' button brings up the Advanced dialog, which allows you to create and manage custom media types and paper sizes.
  - **Media Types**
    - Choosing the 'Add...' button will allow you to define a new custom media type. The 'Print Media Type Test Pattern' button will print a selection of punch forces from which you can choose to set the highest and lowest punch force values that work for your media.



- Selecting a media type from the drop-down list and choosing 'Edit...' will allow you to edit that media type. Note: Default media types can not be edited.
- Selecting a media type from the drop-down list and choosing 'Remove' will delete that media type from the list. Note: Default media types can not be removed.
- **Available Forms**
  - Choosing the 'Add Custom Form...' button will allow you to define a new paper size. Note: Paper sizes wider than 14 inches may not be added to the ViewPlus Max, and paper sizes wider than 9 inches may not be added to the ViewPlus Cub or Cub Jr.
  - Selecting a paper size in the list will show the paper dimensions in the selected units of measure. If the selected size is a custom size, the 'Delete Form' button will be available.
  - Choosing the 'Delete Form' button will remove the selected form.

## **Tiger tab**

The Tiger tab allows to control braille and print options for printing. Use the descriptions below to help you make your selections.



*Shows Tiger Tab*

- **How to Print** - Select the print and braille options appropriate for your document.
  - **Emboss** - When this option is checked, the embosser will create embossed output.
    - **Dot Quality** - Select Standard or Best dots. Printing with standard dot quality is the faster option. Selecting best dot quality causes the printer to punch each dot twice, leading to rounder, smoother dots.
    - **Braille Height** - Select Low, Normal or High braille dot height. Normal dot height sets the braille dots to the same height as the highest graphics dots. Adjust the braille dot height higher or lower to suit the reader.
    - **Emboss Standard Text** - When checked, all text except interline will be embossed. This is helpful when used with a large font to print raised letters.
  
- **Advanced** - Select the advanced printing options appropriate for your document.
  - **More Options** - Selecting the 'More Options...' button brings up an Advanced dialog, which from this tab allows you to set advanced options.
    - **Images** - Select the desired image options. These settings apply only to the embossed output.

- **Invert Colors** - When checked, this option embosses light colors as high dots and dark colors as low dots.
  - **Contrast** - The default setting is 0. The range is from -100 to 100. Increasing the contrast increases the dot height difference of two colors that have intensities that are nearly the same. By increasing the contrast, light colors get lighter and dark colors get darker.
  - **Brightness** - The default setting is 0. The range is from -100 to 100. Increasing the brightness can be useful to increase the intensity of all the colors. This option is most often used with images in which lines are thin and light.
  - **Thin Line Intensity** - If lines in graphics are too thin to emboss correctly, slide the indicator to the right.
  - **Defaults** - The 'Defaults...' button will restore all settings on the Advanced dialog to their default values.
- 
- **Defaults** - The 'Defaults...' button will restore all settings on the Tiger tab to their default values.

## V. Operator Panel

### A. Functions



*Illustration of the operator panel*

*(The buttons are described from left to right order.)*

- **Cancel** - This button is used to cancel a print job or clear a warning message indicated by an LED and error tone.
- **Up Arrow** - This button is used to load paper, or move the paper forward to tear. Pressing and holding this button will move the paper continuously forward.
- **Down Arrow** - This button is used to move the paper back to the ready position after the embossed sheet is torn off. Pressing and holding this button will move the paper continuously backward.

### B. Status Lights

- **Power** - This green light is on when the ViewPlus embosser is ready to receive data. It blinks when printing.
- **Warning** - This orange light is blinking if the ViewPlus embosser is unable to print. All warnings are accompanied by an error tone. Most often, this light indicates that there is no paper present.

## C. Audio Alerts

- **Paper Out** - Beep sequence (high, low) repeats every 10 seconds until user presses Cancel.
- **Paper Jam** - Beep sequence (high, low, high) repeats every 10 seconds until user removes the jammed paper and presses Cancel.
- **Alignment error** - Beep sequence (high, high, low) repeats every 10 seconds until user fixes problem and presses Cancel. Make sure nothing such as paper covers the shiny area of the platen. It may be necessary to brush off paper dust off of this area.

**Other Beep Signals** - If you hear any other series of beeps, you may have a serious problem. Please listen carefully so that you can describe the tone to technical support.

## VII. Braille, Translation and Printing

### A. ViewPlus Tiger Software Suite

Within MS Office Word, and Excel the ViewPlus Tiger Software Suite (TSS) provides direct tools for text to Braille translation in numerous languages and contraction grades. TSS includes easy translation of charts and graphs in MS Excel and provides further tools to easily create and edit tactile graphics originating from other Windows applications.

Please visit <https://viewplus.com/product/tiger-software-suite/> to find further information about the ViewPlus Tiger Software Suite solutions, including the TSS user manual.

### B. Fonts

Braille and Tiger screen fonts are Braille fonts that install with the installation of the ViewPlus printer driver. They can be chosen from any Windows program that includes Windows font selection. Braille and Tiger screen fonts appear as standard text characters on the screen and print as Braille dot patterns. When applying these fonts, each print character is converted to one Braille character that corresponds to the ASCII code of that print character. There will be no contractions, or translation of symbols in the Braille output.

It is very important to use the correct font size for the correct dot spacing to be printed for Braille fonts. For 8 dot Braille fonts, like 'Computer' Braille, the point size needs to be set to 43. Other Braille fonts, indicated through a '29' in their font name, need to be set to point size 29.

Characters or text, that is not translated to Braille will emboss as graphic images of the visual character if 'Emboss Standard Text' option is checked within the Tiger tab of the printing preferences. This enables embossing of visual print characters.

## C. Math and Braille

Create braille math documents using the Tiger Software Suite and MathType from Design Science. Insert text, graphics and math equations directly into a Microsoft Word document and translate to braille in one easy step. Equations will appear in both braille and ink allowing sighted readers to follow along. More information about braille math can be found on the ViewPlus website.

## D. Printing

Now the installation is complete, you should be set to print a document. These are the steps that you should follow to print:

- Open the document to be printed.
- Open the program's File menu and choose Print.
- On the Print dialog, make sure a ViewPlus embosser is selected. Click on the printer properties button and ensure that the correct paper size and Tiger printing options are selected. Click OK on the printer properties dialog when you are finished. Then click OK on the Print dialog to start the print job.
- If you are using form feed paper when the printer is finished, press the **up arrow button** to advance the paper enough so you can detach it. Press the **down arrow** button after you have detached the paper to move the paper to the ready position.
- There are example documents and tips for using various Windows applications at: <https://viewplus.com/viewplus-support/downloads/>

## VIII. Software Packages

For pricing, ordering, and additional information on any of the following products consult the ViewPlus website [www.viewplus.com](http://www.viewplus.com) or your ViewPlus representative.

### A. Software Packages

- **Tiger Software Suite (TSS)**

The ViewPlus Tiger Software Suite (TSS) is the complete solution for producing Braille and tactile graphics by harnessing the full power of MS Word and Excel. The press of a button automatically converts and formats documents that were originally created for an ink printer.

Additionally, the Tiger Software Suite offers tools to ease creation and editing of tactile graphics.

- **MathType by Design Science**

MathType is an Add-in editor in MS Word for math equations. Equations can be entered using MathType editor and directly translated to LaTeX, Nemeth, or other Braille math using the ViewPlus Tiger Software Suite.

- **Audio Graphing Calculator (AGC)**

The ViewPlus Audio Graphing Calculator (AGC) is a self-voicing Windows application that provides access to scientific calculation and graphing for people who are blind or dyslexic. It includes a standard on-screen calculator and a powerful function evaluator as well as the capability of computing and viewing functions visually and as an audio plot. The audio tone plot gives AGC users access on a time scale comparable to access by people without print disabilities to visual plots on standard graphing calculators.

## **IX. Training, Warranty, Maintenance and Support**

For additional information about any of the below, please don't hesitate to consult the ViewPlus website [www.viewplus.com](http://www.viewplus.com) or contact your ViewPlus sales representative.

### **A. Training**

ViewPlus provides two training methods

- 1) Video tutorials/documentation downloadable from our website, and
- 2) Live on-line training sessions with a ViewPlus Support Specialist.

### **B. Maintenance**

It is important to choose a suitable location for the ViewPlus embosser. The cable length between the printer and the host computer should not exceed ten feet (three meters). The location should be sturdy and flat. The printer should not be exposed to direct sunlight, extreme heat, cold, dust or humidity. The AC power outlet must be compatible with the plug of the printer's power cord. Dot quality should be monitored; poor alignment can cause permanent damage to the platen of the ViewPlus embosser.

Switch embosser off and unplug the power cord before doing any maintenance work. Occasional cleaning could be done by opening the top lid and using a vacuum cleaner to clean out paper dust.

Software updates can be downloaded from the ViewPlus Technologies website. You should occasionally check the website for the latest developments.

### **C. Support**

In addition to support material on our website please do not hesitate to contact us for your technical support questions:



- Contact your ViewPlus embosser sales representative if you did not purchase directly from ViewPlus Technologies
- E-mail to [support@viewplus.com](mailto:support@viewplus.com), or
- Call the ViewPlus Technologies office at +1 541 754 4002 (Pacific Standard Time Zone), or the European office at +49 5404 9596 414 (Central European Time Zone).

## **D. Warranty**

For information on your product warranty, please visit our website at <https://viewplus.com/viewplus-support/warranty-details/>

### **Extended Warranty**

For extended warranty options please contact your ViewPlus representative, or the dealer the embosser was purchased from.